

#### Recommended Pit Dimensions

W = Width of pit = Platform width + 30 mm  
L = Length of pit = Platform length + 30 mm  
H = Depth of pit = Lift Table closed height + 5 mm

1 - Pipe for incoming wires (Ø60 - Ø100 mm)

The fixed end of the platform/base frame (B1) shall be placed towards this side

2 - Drain hole

3 - L-profile of 100x100 mm reinforcing the pit edges

Pit material bearing capacity must at least satisfy classification C12/15 for concrete.

Tables which are placed in an outside environment shall if possible be equipped with an external power pack and have it protected/covered.

When installed in a pit it is recommended that the table is fitted with the accessories mechanical stops and lifting eyebolts. If the power pack is integrated to the lift table it is also advisable to equip the platform with an inspection hatch.

#### Pit-Single Scissor / Grop-Enkelsax



General tolerances for dimensions without indication according to ISO 2768-m

System  
Inventor  
Sheet size  
A3

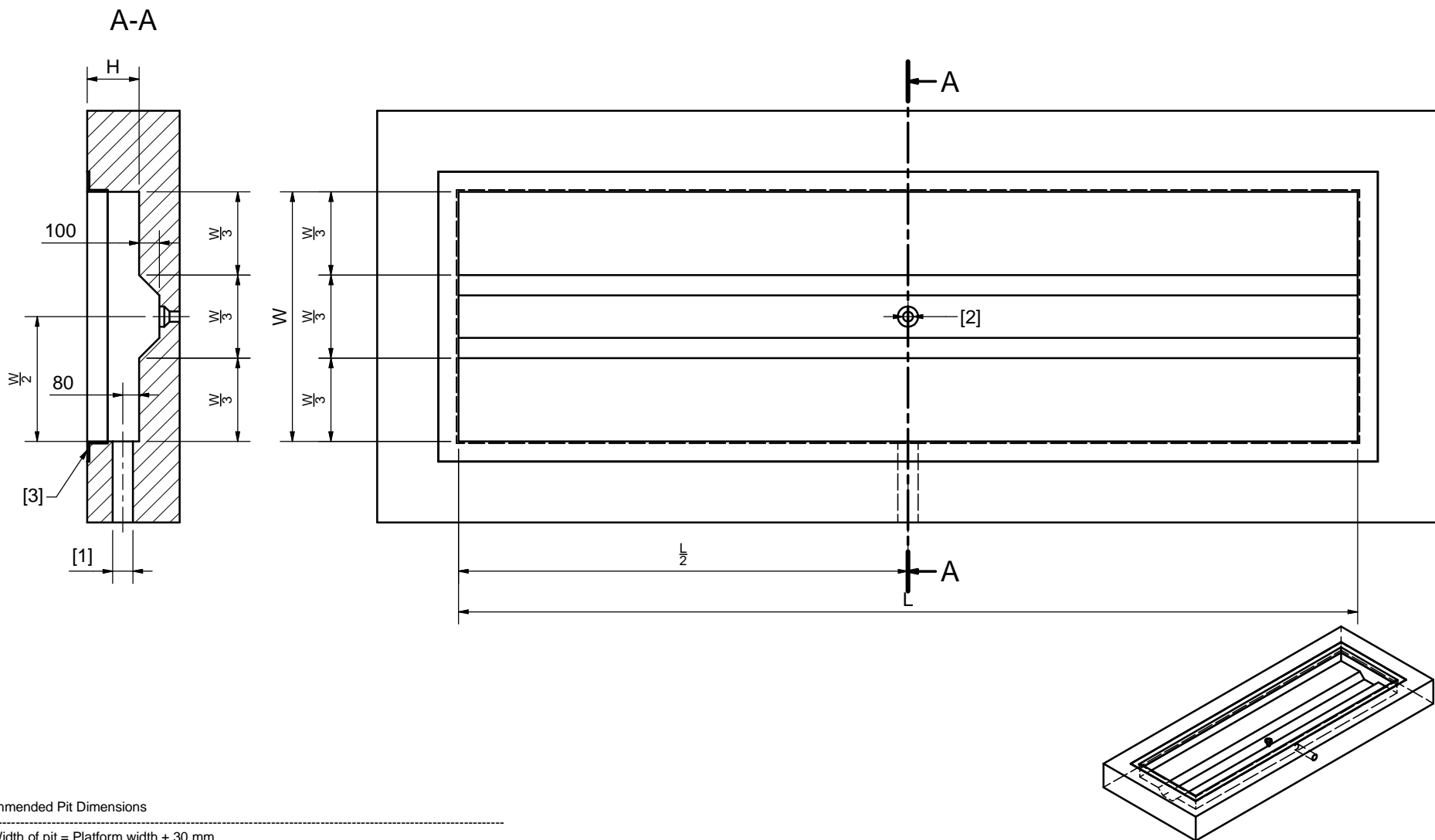
Drawing no

Drawn  
Johso  
Scale  
1:15  
Sheet Number  
1/8  
Date  
2016-04-26  
Est. weight  
0,0 kg

612070

Revision

-




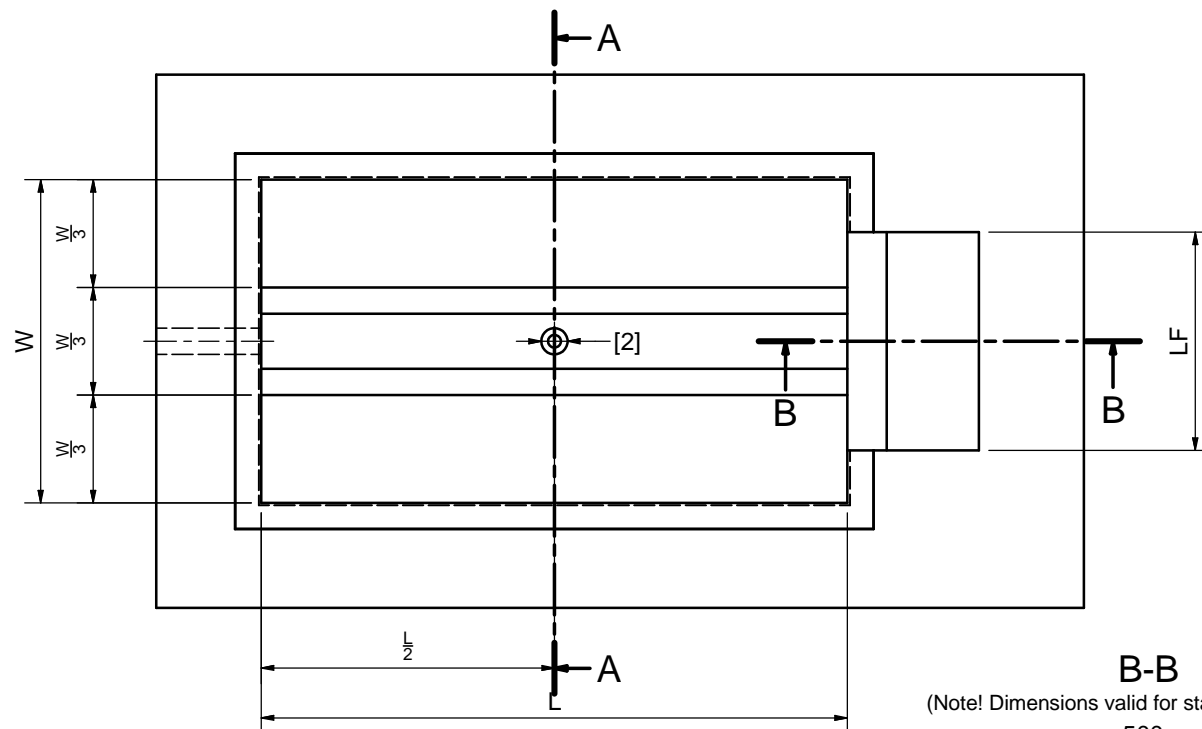
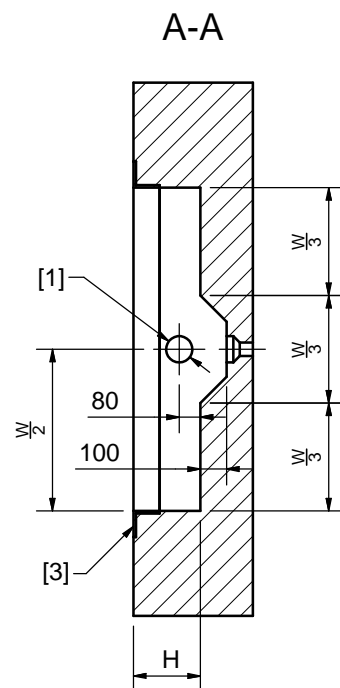
#### Recommended Pit Dimensions

W = Width of pit = Platform width + 30 mm  
L = Length of pit = Platform length + 30 mm  
H = Depth of pit = Lift Table closed height + 5 mm

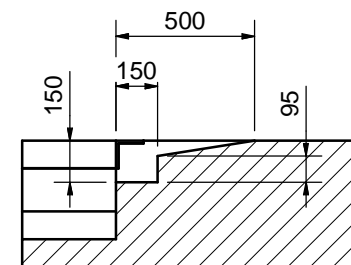
- 1 - Pipe for incoming wires (Ø60 - Ø100 mm)
- 2 - Drain hole
- 3 - L-profile of 100x100 mm reinforcing the pit edges

Pit material bearing capacity must at least satisfy classification C12/15 for concrete.  
Tables which are placed in an outside environment shall if possible be equipped with an external power pack and have it protected/covered.  
When installed in a pit it is recommended that the table is fitted with the accessories mechanical stops and lifting eyebolts. If the power pack is integrated to the lift table it is also advisable to equip the platform with an inspection hatch.

<b>Pit-Horizontal Double Scissor / Grop-Horisontell Dubbelsax</b>		Drawn <b>johso</b>	Date <b>2016-04-26</b>
		Scale <b>1:15</b>	Est. weight <b>0,0 kg</b>
		Sheet Number <b>2 / 8</b>	
	System <b>Inventor</b>	Drawing no <b>612070</b>	
	Sheet size <b>A3</b>		
General tolerances for dimensions without indication according to ISO 2768-m		Revision <b>-</b>	



**B-B**  
(Note! Dimensions valid for standard Load Flap)




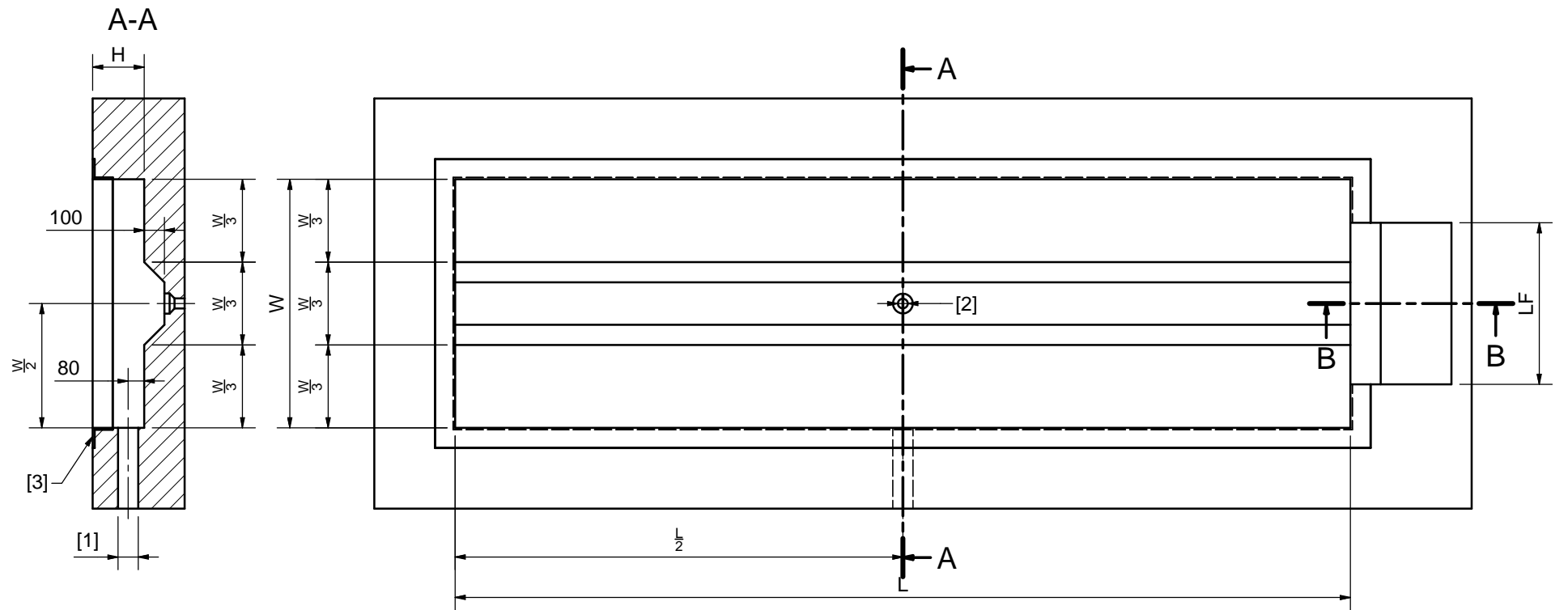
#### Recommended Pit Dimensions

W = Width of pit = Platform width + 30 mm  
L = Length of pit = Platform length + 30 mm  
H = Depth of pit = Lift Table closed height + 5 mm  
LF = Length of Load Flap clear space = Length of Load Flap + 30 mm

- 1 - Pipe for incoming wires (Ø60 - Ø100 mm)  
The fixed end of the platform/base frame (B1) shall be placed towards this side
- 2 - Drain hole
- 3 - L-profile of 100x100 mm reinforcing the pit edges

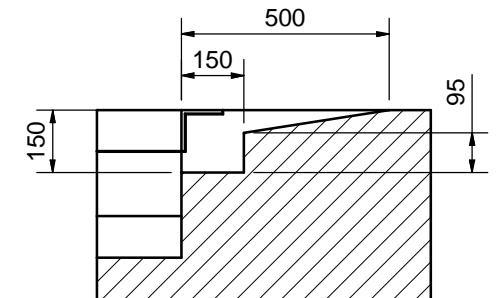
Pit material bearing capacity must at least satisfy classification C12/15 for concrete.  
Tables which are placed in an outside environment shall if possible be equipped with an external power pack and have it protected/covered.  
When installed in a pit it is recommended that the table is fitted with the accessories mechanical stops and lifting eyebolts. If the power pack is integrated to the lift table it is also advisable to equip the platform with an inspection hatch.

<b>Pit-Lift Table with Load Flap / Grop-Lyftbord med Lastklaff</b>		Drawn <b>johso</b>	Date <b>2016-04-26</b>
		Scale <b>1:15</b>	Est. weight <b>0.0 kg</b>
		Sheet Number <b>3/8</b>	
		System <b>Inventor</b>	Drawing no <b>612070</b>
General tolerances for dimensions without indication according to ISO 2768-m		Sheet size <b>A3</b>	Revision <b>-</b>



B-B

(Note! Dimensions valid for standard Load Flap)



#### Recommended Pit Dimensions

W = Width of pit = Platform width + 30 mm  
 L = Length of pit = Platform length + 30 mm  
 H = Depth of pit = Lift Table closed height + 5 mm  
 LF = Length of Load Flap clear space = Length of Load Flap + 30 mm

- 1 - Pipe for incoming wires (Ø60 - Ø100 mm)
- 2 - Drain hole
- 3 - L-profile of 100x100 mm reinforcing the pit edges

Pit material bearing capacity must at least satisfy classification C12/15 for concrete.  
 Tables which are placed in an outside environment shall if possible be equipped with an external power pack and have it protected/covered.  
 When installed in a pit it is recommended that the table is fitted with the accessories mechanical stops and lifting eyebolts. If the power pack is integrated to the lift table it is also advisable to equip the platform with an inspection hatch.

#### Pit-Horizontal Double Scissor with Load Flap Grop-Horisontell Dubbelsax med Lastklaff

Drawn <b>johso</b>	Date <b>2016-04-26</b>
Scale <b>1:15</b>	Est. weight <b>0,0 kg</b>
Sheet Number <b>4 / 8</b>	



General tolerances for dimensions without indication according to ISO 2768-m

System  
**Inventor**  
 Sheet size  
**A3**

Drawing no

**612070**

Revision

-