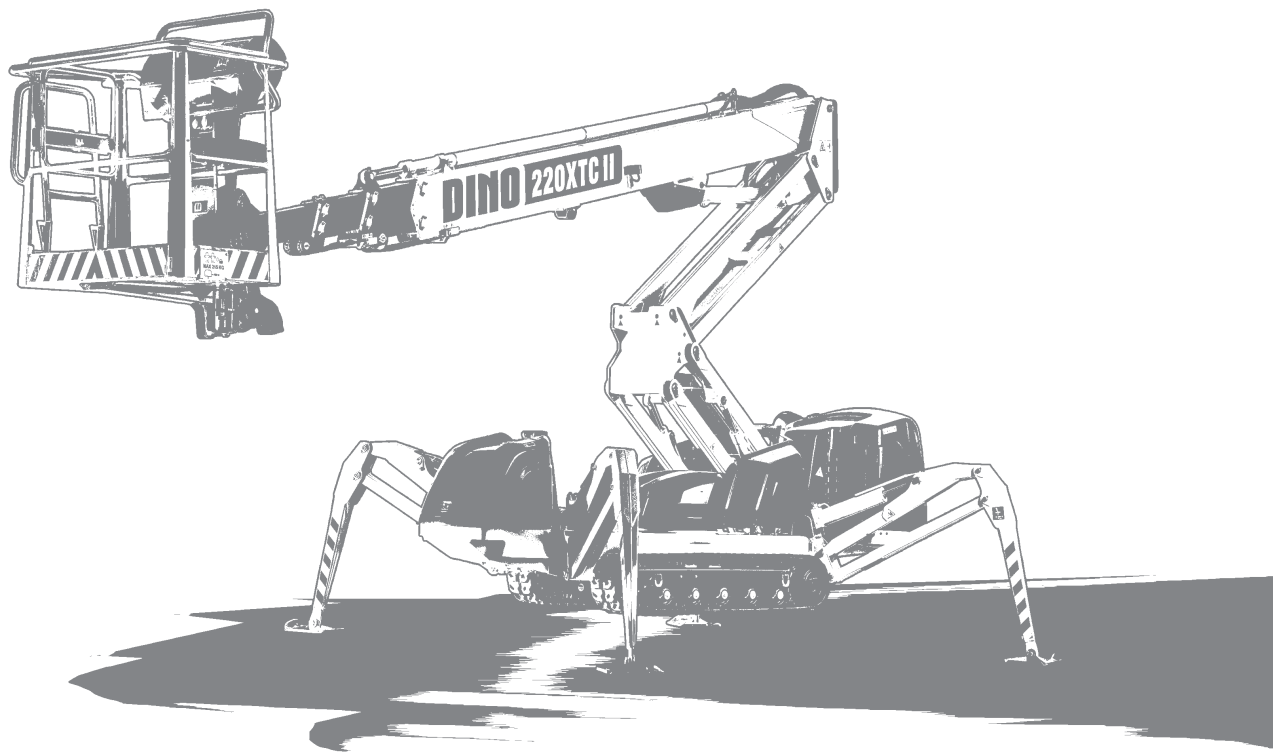


Options for

DINO lightweight

Mobile Elevating Work Platforms

**DINO Self propelled MEWPs /
DINO Spider / Crawler**



Valid for orders

1.1.-31.12.2024

DINO XTC II Series

DINOLift
UP TO THE JOB

STANDARD EQUIPMENT

STANDARD EQUIPMENT	185XTC II	220XTC II
MyDINO Telematics	std	std
Continuous rotation of the boom	std	std
Basket rotation	std 180°	std 180°
AC socket in the basket x 2	std	std
Proportional controls	std	std
USB power outlet in basket	std	std
Arctic kit (block heater, start battery charger)	std	std
Automatic chassis levelling	std	std

OPTIONS

Options for enhanced use

Radio control for driving and outriggers

- Radio-ohjaus ajolaitteelle ja tukijaloille
- Radiostyrning för drivsystem och stödben
- Funkfernsteuerung für Fahrtrieb

185XTC II	220XTC II
option	option



Non-marking tracks instead of std tracks

- Harmaat telat vakiotelojen sijaan
- Gråa larvband istället för std larvband
- Graue nicht-markierende raupenketten statt den Std Raupenketten

185XTC II	220XTC II
available	available



Electric motor 110 / 230 V

- Sähkömoottori 110 / 230 V
- Elmotor 110 / 230 V
- Elektromotor 110 / 230 V

185XTC II	220XTC II
available	available



Options for basket

LED working lights

- LED työvalot
- LED arbetsbelysning
- LED Arbeitslichter

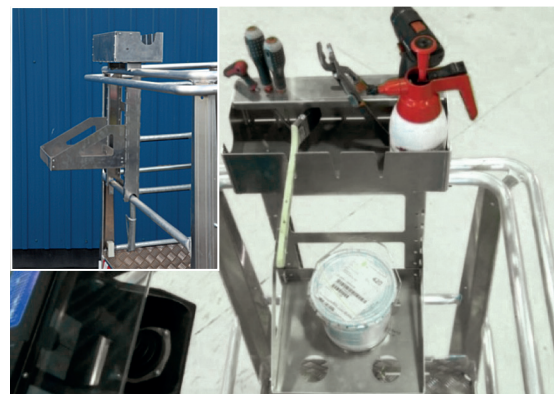
185XTC II	220XTC II
available	available



Rack for tools & accessories, removable

- Työkaluteline, irrotettava
- Verktygsställning, avtagbar
- Gestell für Werkzeuge, abnehmbar

185XTC II	220XTC II
available	available



12 V outlet in basket

- 12 V -liitäntä korissa
- 12 V -uttag i korgen
- 12 V -Ausgang im Korb

185XTC II	220XTC II
available	available



DINO Safe Guard, secondary guarding, including AV warning

- DINO Safe Guard puristumisenestosuojaa AV-hälytyksellä
- DINO Safe Guard klämskydd med larmsignal
- DINO Safe Guard sekundäres Schutzsystem mit Alarmsignal

185XTC II	220XTC II
available	available



Anemometer

- Tuulimittari
- Vindmätare
- Windmesser



185XTC II	220XTC II
available	available

Basket load sensor

- Korikuormananturi
- Lastsensor på korgen
- Korblastsensor



185XTC II	220XTC II
available	available

Other options

Thermometer / temperature limit switch

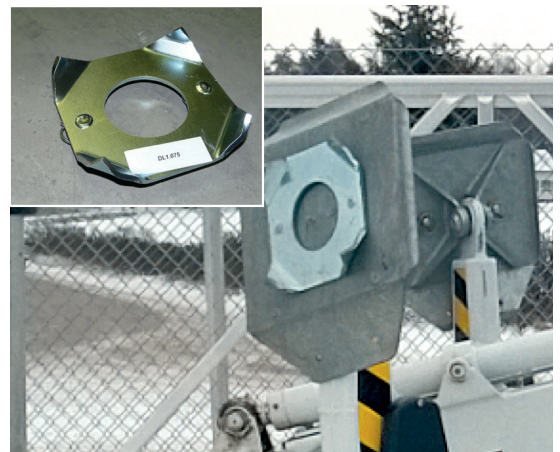
- Lämpötilarajakytkin
- Temperaturgränsbrytare
- Temperatur Endschalter

185XTC II	220XTC II
available	available



Spikes for outrigger pads

- Piikkilevyt tukijalkoihin
- Vinterplattor för stödbenen
- Winterstützen



185XTC II	220XTC II
available	available

LED flashing warning light

- LED vilkkuva varoitusvalo
- LED blinkande varningsljus
- LED Kennblitzleuchte

185XTC II	220XTC II
available	available



Special color (RAL color map)*

- Erikoisväri (RAL-värikartta)*
- Specialfärg (RAL-färgkarta)*
- Sonderfarbe (RAL-Farbpalette)*

* Contact us for details

185XTC II	220XTC II
available	available



Hydraulic oil cooler for hot environment

- Hydraulioiljyn jäähdytin kuumaan työskentely-ympäristöön
- Oljekylare för varm miljö
- Hydraulikölkühler für Bedingungen mit erhöhter Umgebungstemperatur

185XTC II	220XTC II
available	available

Trailer DT3500L purchased together with XTC II**Incl: ramps, chains, outriggers.****Material: Aluminum**

- sis. rampit, sidontaketjut, tukijalat. Materiaali: alumiini
- inkl. ramp, stödben och kätting. Material: aluminium
- inkl. Rampen, Ketten, Stützen. Material: Aluminum

185XTC II

available

220XTC II

available



DINO XTC II	185XTC II	220XTC II
STANDARD EQUIPMENT		
MyDINO Telematics	std	std
Continuous rotation of the boom	std	std
Basket rotation	std 180°	std 180°
AC socket in the basket x 2	std	std
Proportional controls	std	std
USB power outlet in basket	std	std
Arctic kit (block heater, start battery charger)	std	std
Automatic chassis levelling	std	std
OPTIONS		
Options for enhanced use		
Radio control for driving and outriggers	option	option
Non-marking tracks instead of std tracks	option	option
Electric motor 110 / 230 V	option	option
Options for basket		
LED working lights	option	option
Rack for tools & accessories, removable	option	option
12V outlet in basket	option	option
DINO Safe Guard, secondary guarding including AV warning	option	option
Anemometer	option	option
Basket load sensor	option	option
Other options		
Thermometer/ Temperature limit switch	option	option
Spikes for outrigger plates	option	option
LED flashing warning light	option	option
Special colour (RAL color map)	option	option
Hydraulic oil cooler for hot environment	option	option
Trailer DT3500L purchased together with XTC II		
Incl: ramps, chains, outriggers. Material: Aluminum	option	option